

# BANK OF SPRINGFIELD CENTER (formerly Prairie Capital Convention Center)

Springfield, IL

**MAIN HALL:** 44,000 sq. ft

**DOOR ACCESS:** 4 corner doors 11'11" x 14'6"

**FREIGHT ELEVATOR:** 11' x 18' x 15'; 20,000 lb load limit

**POWER:** 800 amp, 600 amp, 400 amp, 3 phase 5 wire 30' from  
down stage left

**SHORE POWER:** 1- 220 volt 100 amp

**LOADING DOCKS:** 4 w/ dock plates on main level- 20' push to stage

**FLOOR LOAD LIMIT:** 350 lbs per sq. ft.

**SPOT LIGHTS:** 6 Super Trooper, 2 Troopers

**RIGGING:** 47' to low steel, 72' to high steel

**WEIGHT LIMITS:** 1,000 lbs/ point

7,000 lbs/ truss

62,000 lbs/ half hall

120,000 lbs/ full hall

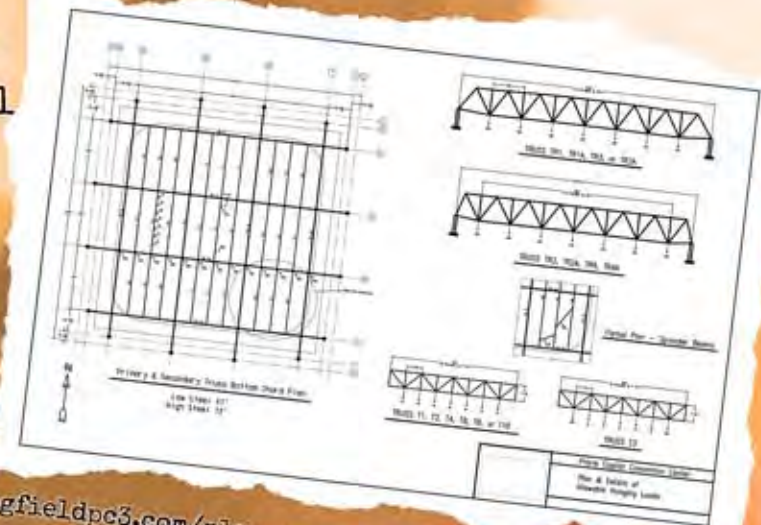
**INTERNET:** wireless and 1 hard wired

**STAGING:** SICO Roll-n-Set Stage

32 pieces of 8' x 8'

**WEIGHT LIMIT:** 125 lbs per sq. ft.

## TECH SPECS

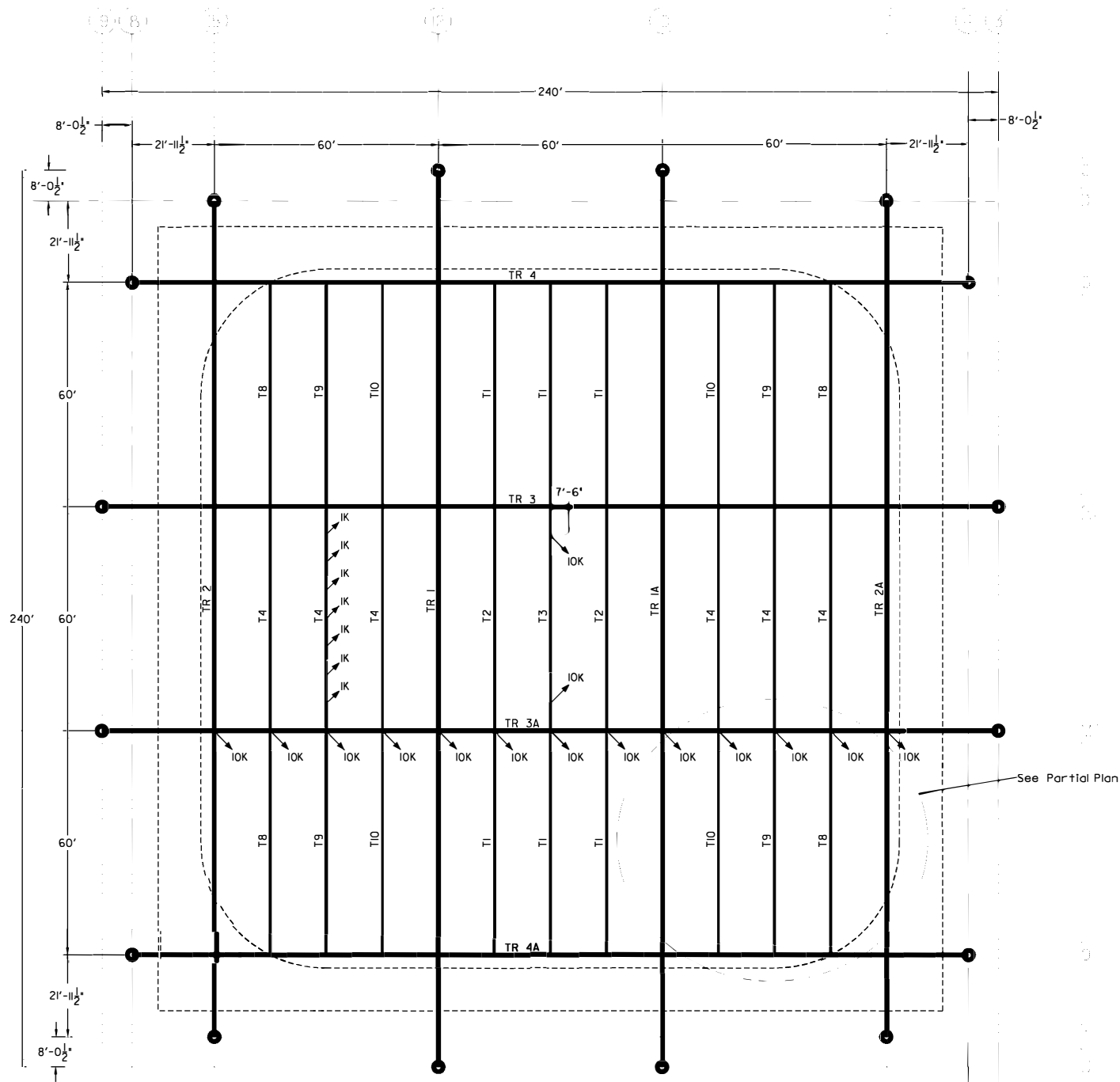


[www.springfieldpc3.com/plan-your-event/tech-information.aspx](http://www.springfieldpc3.com/plan-your-event/tech-information.aspx)

# BANK OF SPRINGFIELD CENTER (formerly Prairie Capital Convention Center)

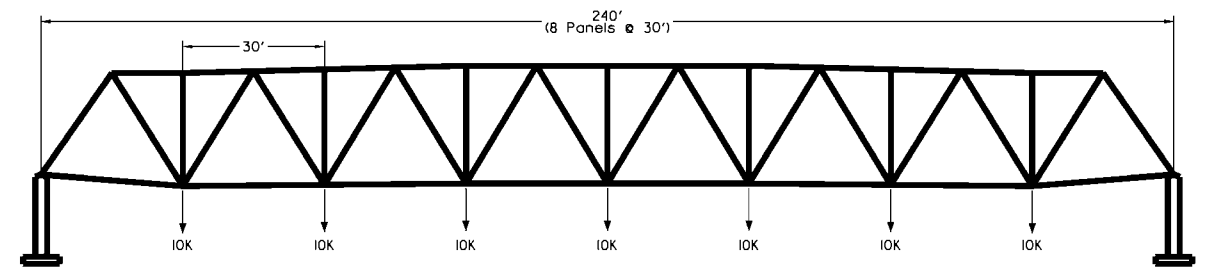
Springfield, IL



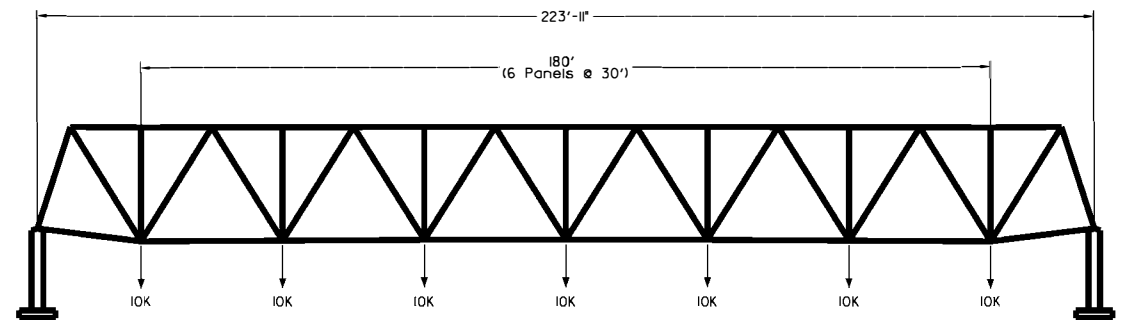


Primary & Secondary Truss Bottom Chord Plan

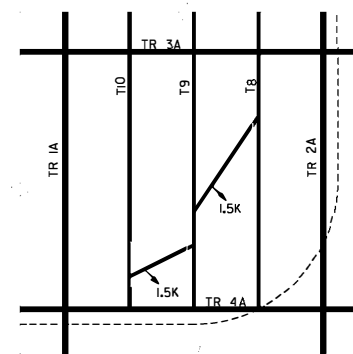
Low Steel 47'  
High Steel 72'



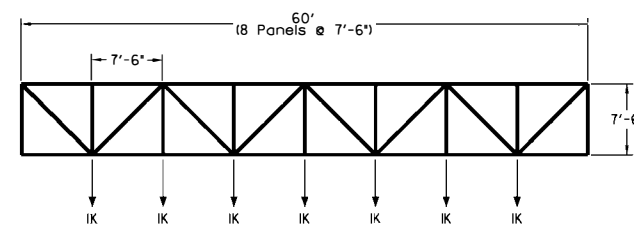
TRUSS TR1, TR1A, TR3, or TR3A



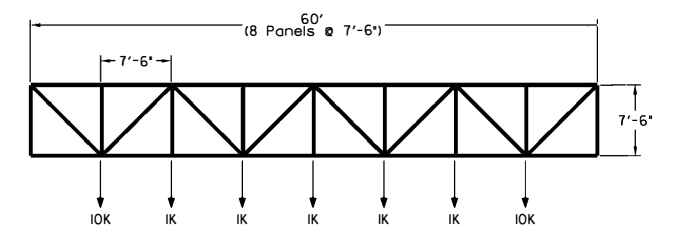
TRUSS TR2, TR2A, TR4, TR4A



Partial Plan - Spreader Beams



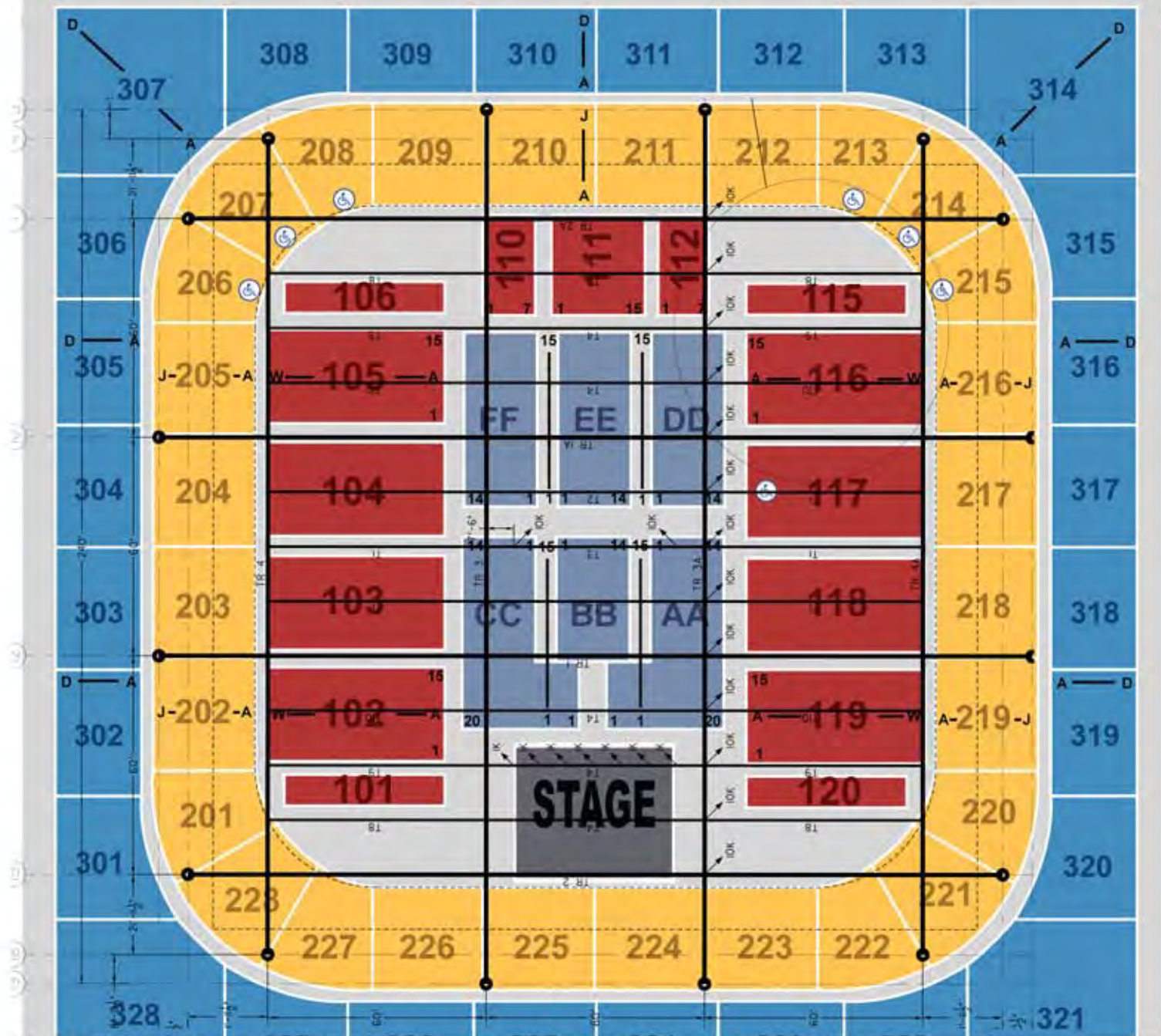
TRUSS T1, T2, T4, T8, T9, or T10



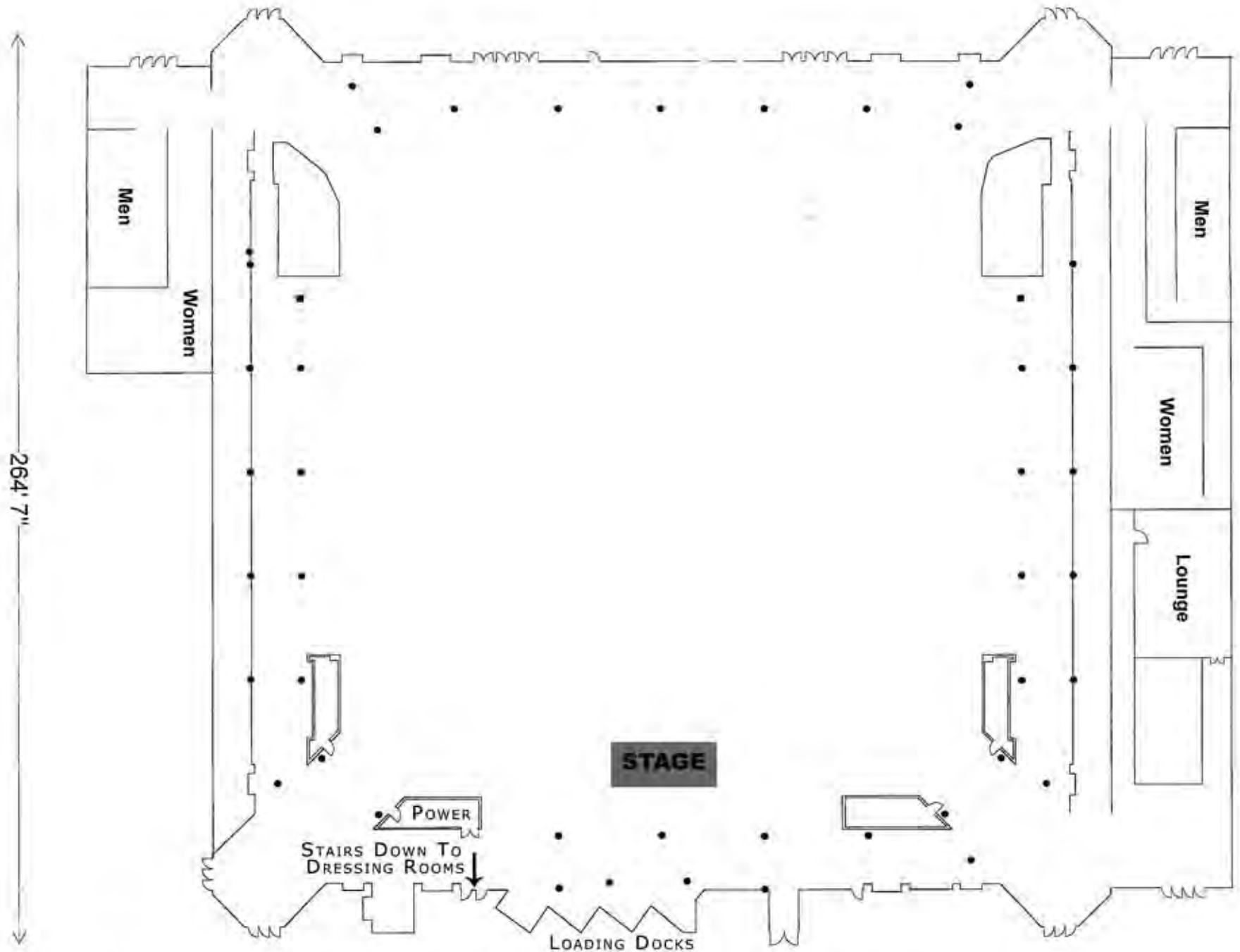
TRUSS T3

BOS Center (formerly PCCC)

Plan & Details of  
Allowable Hanging Loads



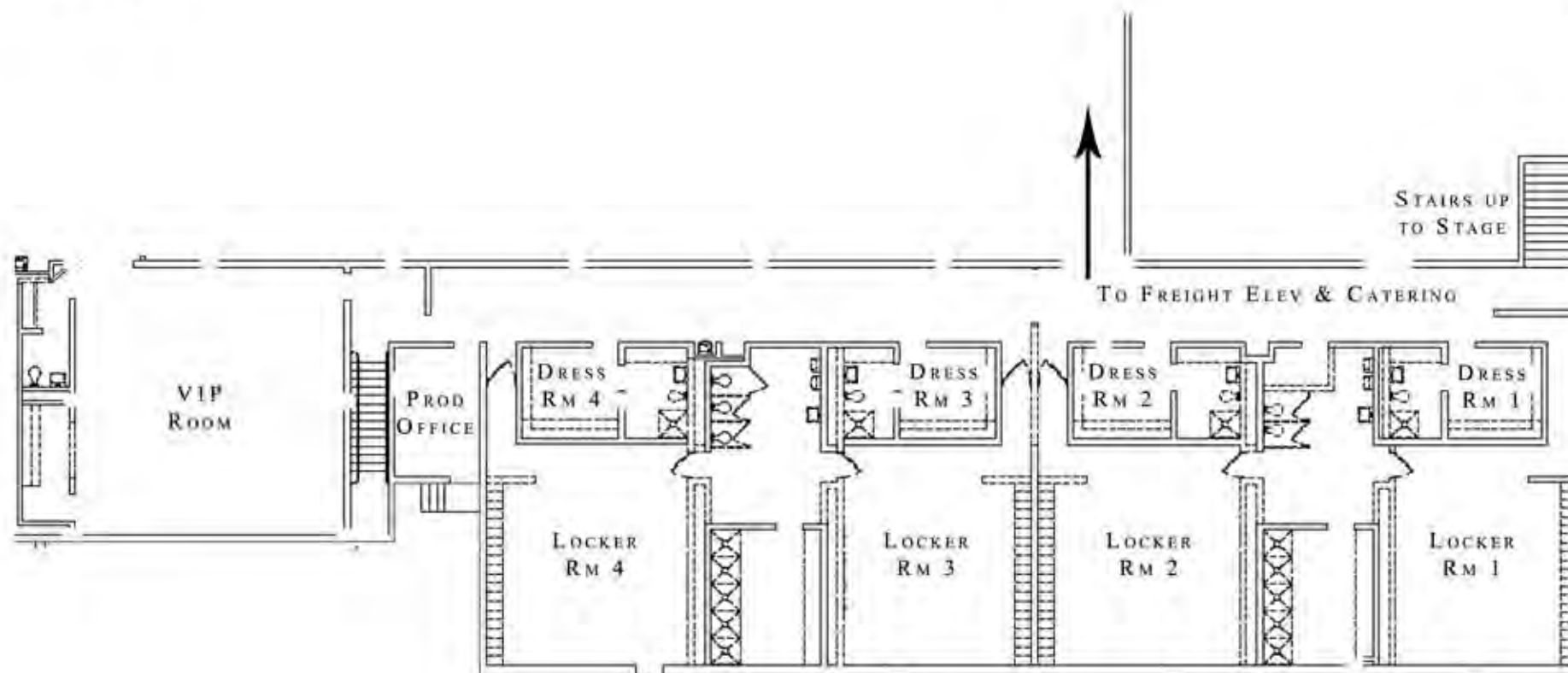
BANK OF SPRINGFIELD CENTER (formerly Prairie Capital Convention Center)



BANK OF SPRINGFIELD CENTER (formerly Prairie Capital Convention Center)

# BANK OF SPRINGFIELD CENTER (formerly Prairie Capital Convention Center)

Springfield, IL



LOWER LEVEL LOCKER ROOMS & DRESSING ROOMS